



ENTTEC LED MAPPER (ELM)

SKU: 70581 (Licences: ENTRY: 4U / STANDARD: 16U / ADVANCED: 48U / PROFESSIONAL: 96U / SUPER: 256U / ULTIMATE: 512U / ARCHITECTURAL: 1024U / ELITE: 2048U)

Let your creativity soar with the versatility, power and precision of ENTTEC's award-winning, content-based LED mapping software.

- > Highly-intuitive interface
- > Huge professional effects library
- > Audio reactive mix feature
- > Control up to 2048 universes
- > Upgrade your license at any time
- > Proven track record of high-profile projects

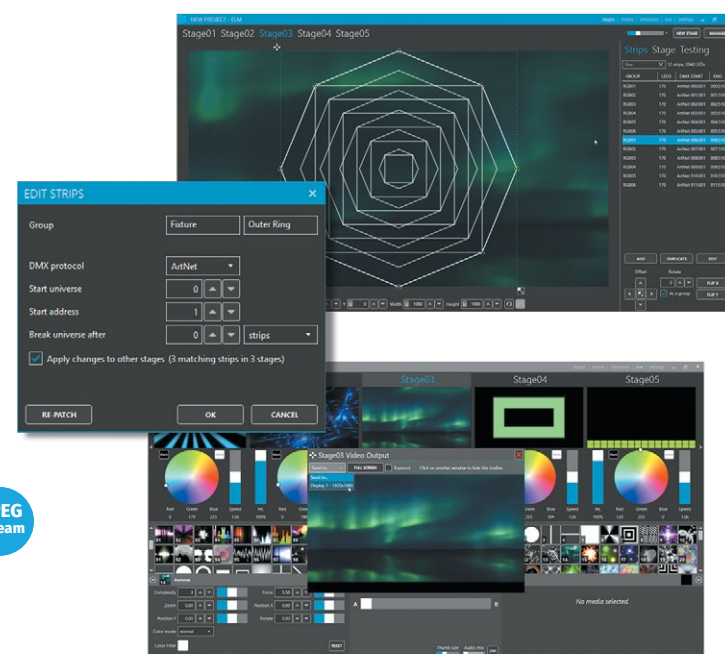
DATA IN



DATA OUT



*using DMX USB Pro



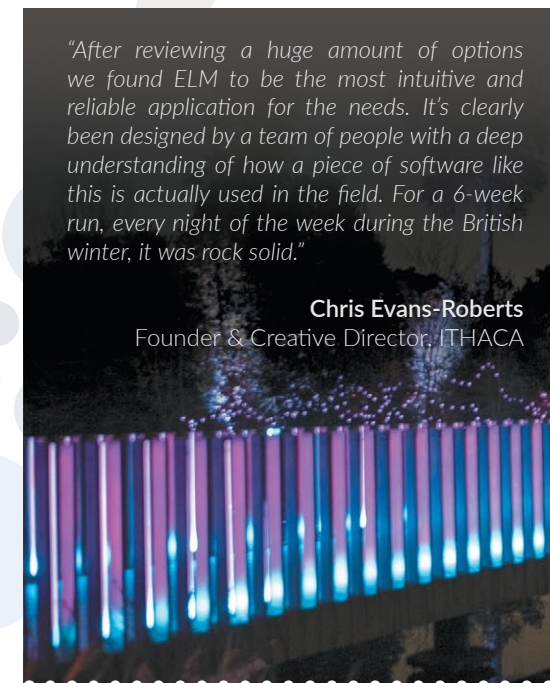
SYSTEM REQUIREMENTS: Windows 8 or 10, 2GHz Intel i7, 8 GB RAM, NVIDIA GeForce 900 series/NVIDIA 10 series.

ELM combines raster-based media with vector-based, scalable and repositionable objects to represent your LED strips. Choose whether your LEDs are in a line, curve or full loop with just a few mouse clicks - then stretch, resize or move them around on-screen to match your strips in the real world.

Load and play back HD video files, generative effects, still images or display live streams using NDI, Spout, MPEG streams or physical capture cards. Thanks to ELM's inbuilt transcoder, media can be optimised for the most efficient playback. ELM supports scheduling, live playback and triggering from lighting consoles or 3rd party apps.

"After reviewing a huge amount of options we found ELM to be the most intuitive and reliable application for the needs. It's clearly been designed by a team of people with a deep understanding of how a piece of software like this is actually used in the field. For a 6-week run, every night of the week during the British winter, it was rock solid."

Chris Evans-Roberts
Founder & Creative Director, ITHACA

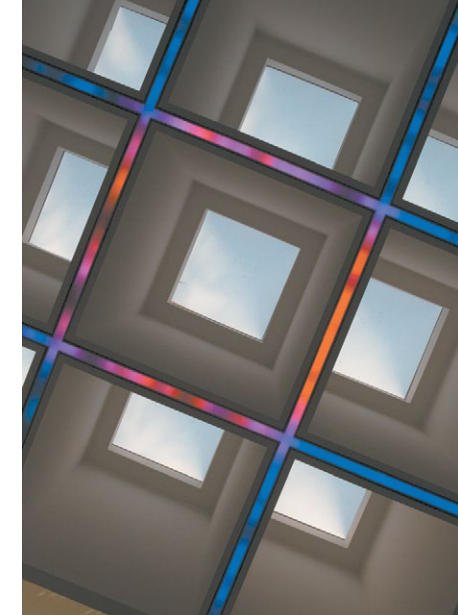


ELM @ Kew Gardens, London, UK ~ by ITHACA

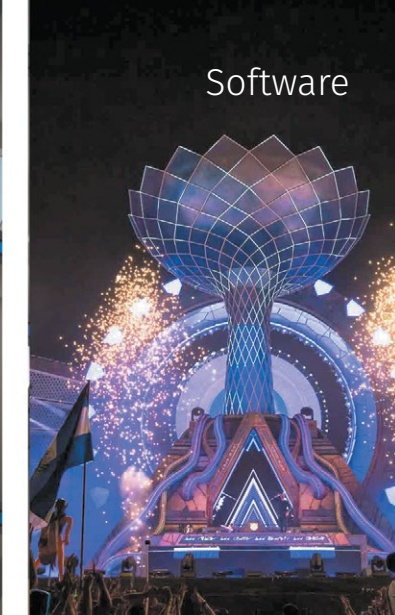
With output support for Art-Net, sACN and KiNet, ELM works with a large number of ENTTEC and 3rd party lighting products. You can easily integrate ELM with your favourite control software using DMX, Art-Net, sACN, ENTTEC's DMX USB Pro, OSC or HTTP. ELM supports a wide range of LEDs such as RGB, BRG, RGBW, RGBWA and white in either 8- or 16-bit profiles.

Optional support

ELM software runs on PC/Windows systems ONLY, but it can be controlled remotely by iOS devices with Ctrl for iPad by ON LX. With full implementation of the ELM media picker, users can configure stages and synchronize media in real time, creating a perfect front-end interface for any installation requiring efficient editing on the run. Ctrl for iPad is available from the App Store.



ELM @ The Glenwood, Raleigh, NC



ELM @ Electric Daisy Carnival, Las Vegas